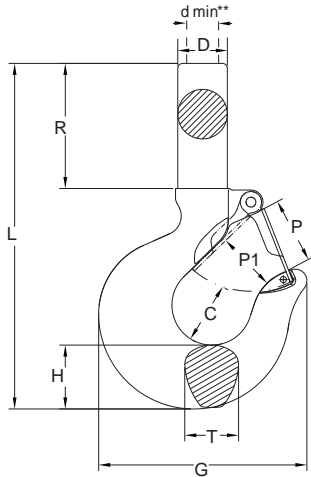


YOKE



U.S. RIGGING SUPPLY





- YOKE alloy shank hoist hook are manufactured from the finest quality alloy steel.
- YOKE shank hoist hook are quenched and tempered.
- 20,000 cycle fatigue rate to 1.5 times working load limit.
- All shank hoist hooks are 100% magnaflux crack detected.
- All parts with batch number for quality certified and traceability.
- YOKE Shank Hoist Hooks are proof tested to 2 times the working load limit..
- YOKE Shank Hoist Hooks are supplied without threads
- YOKE Shank Hoist Hooks are Predrilled to accept a YOKE latch kits.
- YOKE Shank Hoist Hooks are supplied with certification for each hook.

Alloy Shank Hoist Hook

self colored.

| Item No. | | Working Load Limit tons* | Hook Feature Code | Dimensions (inch) | | | | | | | | | | N.W. Lbs |
|--------------|----------------|-----------------------------|-------------------|-------------------|------|---------|------|------|------|-------|-------|------|-------|-------------|
| with latch | without latch | | | C | D | d min** | T | P | P1 | G | R | H | L | |
| 8-171.SC-01 | 8-171.SC/0-01 | 1 | AA | 0.97 | 0.79 | 0.53 | 0.63 | 1.02 | 0.87 | 3.07 | 2.00 | 0.75 | 5.39 | 0.9 |
| 8-171.SC-015 | 8-171.SC/0-015 | 1.5 | BB | 0.97 | 0.66 | 0.62 | 0.71 | 0.95 | 0.75 | 3.15 | 2.45 | 0.87 | 5.98 | 1.3 |
| 8-171.SC-02 | 8-171.SC/0-02 | 2 | CC | 1.03 | 0.72 | 0.66 | 0.88 | 1.06 | 0.79 | 3.58 | 2.56 | 1.00 | 6.38 | 1.8 |
| 8-171.SC-03 | 8-171.SC/0-03 | 3 | DD | 1.16 | 0.88 | 0.81 | 0.94 | 1.22 | 0.98 | 4.02 | 2.91 | 1.18 | 7.72 | 2.6 |
| 8-171.SC-05 | 8-171.SC/0-05 | 5 | EE | 1.53 | 1.26 | 1.03 | 1.31 | 1.42 | 1.22 | 5.12 | 3.50 | 1.46 | 9.45 | 5.1 |
| 8-171.SC-07 | 8-171.SC/0-07 | 7 | FF | 1.94 | 1.41 | 1.27 | 1.66 | 1.77 | 1.54 | 6.54 | 3.89 | 1.82 | 11.18 | 9.3 |
| 8-171.SC-11 | 8-171.SC/0-11 | 11 | GG | 2.46 | 1.81 | 1.52 | 1.88 | 2.40 | 2.24 | 7.72 | 4.41 | 2.28 | 12.91 | 15.4 |
| 8-171.SC-15 | 8-171.SC/0-15 | 15 | HH | 2.59 | 2.00 | 1.75 | 2.19 | 2.83 | 2.44 | 8.70 | 4.53 | 2.60 | 13.54 | 21.3 |
| 8-171.SC-22 | 8-171.SC/0-22 | 22 | JJ | 2.81 | 2.56 | 2.00 | 2.69 | 3.39 | 3.19 | 10.91 | 5.91 | 3.01 | 16.97 | 41.4 |
| 8-171.SC-30 | 8-171.SC/0-30 | 30 | KK | 3.44 | 3.12 | 2.50 | 3.00 | 3.50 | 3.27 | 13.90 | 10.00 | 3.62 | 23.07 | 75.4 |

★ Minimum Ultimate Load is 5 times the Working Load Limit. Maximum Proof Load is 2.5 times the Working Load Limit.

**d min.:After machining the shank, proof loading must be carried out.

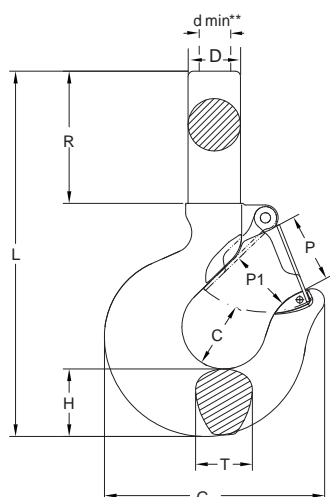
*S.C.=Self Colored

| Item No. | | Working Load Limit tons* | Hook Feature Code | Dimensions (mm) | | | | | | | | | | N.W. Kg |
|--------------|----------------|-----------------------------|-------------------|-----------------|----|---------|----|----|----|-----|-----|----|-----|------------|
| with latch | without latch | | | C | D | d min** | T | P | P1 | G | R | H | L | |
| 8-171.SC-01 | 8-171.SC/0-01 | 1 | AA | 25 | 20 | 13 | 16 | 26 | 22 | 78 | 51 | 19 | 137 | 0.4 |
| 8-171.SC-015 | 8-171.SC/0-015 | 1.5 | BB | 25 | 23 | 15 | 18 | 24 | 19 | 80 | 62 | 22 | 152 | 0.6 |
| 8-171.SC-02 | 8-171.SC/0-02 | 2 | CC | 26 | 26 | 16 | 22 | 27 | 20 | 91 | 65 | 25 | 162 | 0.8 |
| 8-171.SC-03 | 8-171.SC/0-03 | 3 | DD | 29 | 29 | 20 | 24 | 31 | 25 | 102 | 74 | 30 | 196 | 1.2 |
| 8-171.SC-05 | 8-171.SC/0-05 | 5 | EE | 38 | 32 | 26 | 33 | 36 | 31 | 130 | 89 | 37 | 240 | 2.3 |
| 8-171.SC-07 | 8-171.SC/0-07 | 7 | FF | 49 | 38 | 32 | 42 | 45 | 39 | 166 | 99 | 46 | 284 | 4.2 |
| 8-171.SC-11 | 8-171.SC/0-11 | 11 | GG | 62 | 45 | 38 | 48 | 61 | 57 | 196 | 112 | 58 | 328 | 7.0 |
| 8-171.SC-15 | 8-171.SC/0-15 | 15 | HH | 65 | 51 | 44 | 56 | 72 | 62 | 221 | 115 | 66 | 344 | 10.1 |
| 8-171.SC-22 | 8-171.SC/0-22 | 22 | JJ | 71 | 67 | 50 | 68 | 86 | 81 | 277 | 150 | 77 | 431 | 18.8 |
| 8-171.SC-30 | 8-171.SC/0-30 | 30 | KK | 87 | 70 | 63 | 76 | 89 | 83 | 353 | 254 | 92 | 586 | 34.2 |

★ Minimum Ultimate Load is 5 times the Working Load Limit. Maximum Proof Load is 2.5 times the Working Load Limit.

**d min.:After machining the shank, proof loading must be carried out.

*S.C.=Self Colored



- YOKE carbon shank hoist hook are manufactured from the finest quality carbon steel.
- YOKE shank hoist hook are quenched and tempered.
- 20,000 cycle fatigue rate to 1.5 times working load limit.
- All shank hoist hooks are 100% magnaflux crack detected.
- All parts with batch number for quality certified and traceability.
- YOKE Shank Hoist Hooks are proof tested to 2 times the working load limit.
- YOKE Shank Hoist Hooks are supplied without threads.
- YOKE Shank Hoist Hooks are Predrilled to accept a YOKE latch kits.
- YOKE Shank Hoist Hooks are supplied with certification for each hook.

Carbon Shank Hoist Hook

self colored.

| Item No. | | Working Load Limit tons* | Hook Feature Code | Dimensions (inch) | | | | | | | | | | N.W. Lbs |
|---------------|-----------------|-----------------------------|-------------------|-------------------|------|---------|------|------|------|-------|-------|------|-------|-------------|
| with latch | without latch | | | C | D | d min** | T | P | P1 | G | R | H | L | |
| 8-191.SC-0075 | 8-191.SC/0-0075 | 0.75 | AA | 0.97 | 0.79 | 0.53 | 0.63 | 1.02 | 0.87 | 3.07 | 2.00 | 0.75 | 5.39 | 0.9 |
| 8-191.SC-01 | 8-191.SC/0-01 | 1 | BB | 0.97 | 0.66 | 0.62 | 0.71 | 0.95 | 0.75 | 3.15 | 2.45 | 0.87 | 5.98 | 1.3 |
| 8-191.SC-015 | 8-191.SC/0-015 | 1.5 | CC | 1.03 | 0.72 | 0.66 | 0.88 | 1.06 | 0.79 | 3.58 | 2.56 | 1.00 | 6.38 | 1.9 |
| 8-191.SC-02 | 8-191.SC/0-02 | 2 | DD | 1.16 | 0.88 | 0.81 | 0.94 | 1.22 | 0.98 | 4.02 | 2.91 | 1.18 | 7.72 | 2.6 |
| 8-191.SC-03 | 8-191.SC/0-03 | 3 | EE | 1.53 | 1.26 | 1.03 | 1.31 | 1.42 | 1.22 | 5.12 | 3.50 | 1.46 | 9.45 | 5.1 |
| 8-191.SC-05 | 8-191.SC/0-05 | 5 | FF | 1.94 | 1.41 | 1.27 | 1.66 | 1.77 | 1.54 | 6.54 | 3.89 | 1.82 | 11.18 | 9.5 |
| 8-191.SC-075 | 8-191.SC/0-075 | 7.5 | GG | 2.46 | 1.81 | 1.52 | 1.88 | 2.40 | 2.24 | 7.72 | 4.41 | 2.28 | 12.91 | 15.6 |
| 8-191.SC-10 | 8-191.SC/0-10 | 10 | HH | 2.59 | 2.00 | 1.75 | 2.19 | 2.83 | 2.44 | 8.70 | 4.53 | 2.60 | 13.54 | 21.6 |
| 8-191.SC-15 | 8-191.SC/0-15 | 15 | JJ | 2.81 | 2.56 | 2.00 | 2.69 | 3.39 | 3.19 | 10.91 | 5.91 | 3.01 | 16.97 | 40.8 |
| 8-191.SC-20 | 8-191.SC/0-20 | 20 | KK | 3.44 | 3.12 | 2.50 | 3.00 | 3.50 | 3.27 | 13.90 | 10.00 | 3.62 | 23.07 | 75.4 |

★ Minimum Ultimate Load is 5 times the Working Load Limit. Maximum Proof Load is 2.5 times the Working Load Limit.

**d min.:After machining the shank, proof loading must be carried out.

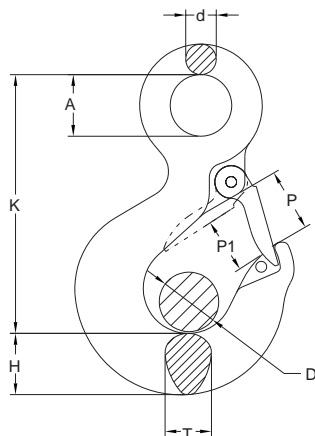
*S.C.=Self Colored

| Item No. | | Working Load Limit tons* | Hook Feature Code | Dimensions (mm) | | | | | | | | | | N.W. Kg |
|---------------|-----------------|-----------------------------|-------------------|-----------------|----|---------|----|----|----|-----|-----|----|-----|------------|
| with latch | without latch | | | C | D | d min** | T | P | P1 | G | R | H | L | |
| 8-191.SC-0075 | 8-191.SC/0-0075 | 0.75 | AA | 25 | 20 | 13 | 16 | 26 | 19 | 78 | 51 | 19 | 137 | 0.4 |
| 8-191.SC-01 | 8-191.SC/0-01 | 1 | BB | 25 | 23 | 15 | 18 | 24 | 21 | 80 | 62 | 22 | 152 | 0.6 |
| 8-191.SC-015 | 8-191.SC/0-015 | 1.5 | CC | 26 | 26 | 16 | 22 | 27 | 25 | 91 | 65 | 25 | 162 | 0.8 |
| 8-191.SC-02 | 8-191.SC/0-02 | 2 | DD | 29 | 29 | 20 | 24 | 31 | 29 | 102 | 74 | 30 | 196 | 1.2 |
| 8-191.SC-03 | 8-191.SC/0-03 | 3 | EE | 38 | 32 | 26 | 33 | 36 | 36 | 130 | 89 | 37 | 240 | 2.3 |
| 8-191.SC-05 | 8-191.SC/0-05 | 5 | FF | 49 | 38 | 32 | 42 | 45 | 46 | 166 | 99 | 46 | 284 | 4.3 |
| 8-191.SC-075 | 8-191.SC/0-075 | 7.5 | GG | 62 | 45 | 38 | 48 | 61 | 58 | 196 | 112 | 58 | 328 | 7.1 |
| 8-191.SC-10 | 8-191.SC/0-10 | 10 | HH | 65 | 51 | 44 | 56 | 72 | 64 | 221 | 115 | 66 | 344 | 9.8 |
| 8-191.SC-15 | 8-191.SC/0-15 | 15 | JJ | 71 | 67 | 50 | 68 | 86 | 76 | 277 | 150 | 77 | 431 | 18.5 |
| 8-191.SC-20 | 8-191.SC/0-20 | 20 | KK | 87 | 70 | 63 | 76 | 89 | 93 | 353 | 254 | 92 | 586 | 34.2 |

★ Minimum Ultimate Load is 5 times the Working Load Limit. Maximum Proof Load is 2.5 times the Working Load Limit.

**d min.:After machining the shank, proof loading must be carried out.

*S.C.=Self Colored



- YOKE alloy eye hoist hook are manufactured from the finest quality alloy steel.
- YOKE eye hoist hook are quenched and tempered.
- 20,000 cycle fatigue rate to 1.5 times working load limit.
- All eye hoist hooks are 100% magnaflux crack detected.
- All parts with batch number for quality certified and traceability.
- YOKE Eye Hoist Hooks are proof tested to 2 times the working load limit.
- YOKE Eye Hoist Hooks are Predrilled to accept a YOKE latch kits.
- YOKE Eye Hoist Hooks are supplied with certification.

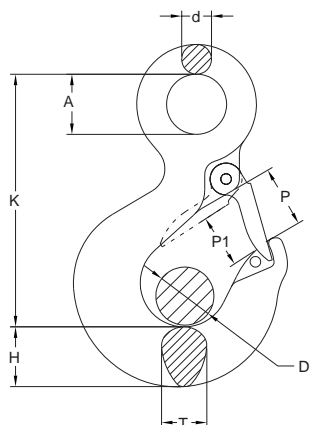
Alloy Eye Hoist Hook

| Item No. | | Working Load Limit tons* | Hook Feature Code | Dimensions (inch) | | | | | | | | N.W. Lbs |
|------------|---------------|-----------------------------|-------------------|-------------------|------|------|------|------|-------|------|------|-------------|
| with latch | without latch | | | P | P1 | A | T | H | K | D | d | |
| 8-173-01 | 8-173/0-01 | 1 | AA | 1.02 | 0.87 | 0.91 | 0.59 | 0.75 | 3.27 | 0.87 | 0.39 | 0.6 |
| 8-173-015 | 8-173/0-015 | 1.5 | BB | 0.95 | 0.75 | 0.91 | 0.67 | 0.83 | 3.74 | 0.75 | 0.43 | 0.9 |
| 8-173-02 | 8-173/0-02 | 2 | CC | 1.06 | 0.79 | 1.14 | 0.83 | 1.02 | 4.17 | 0.79 | 0.51 | 1.5 |
| 8-173-03 | 8-173/0-03 | 3 | DD | 1.22 | 0.98 | 1.26 | 0.95 | 1.14 | 4.80 | 0.98 | 0.59 | 2.0 |
| 8-173-05 | 8-173/0-05 | 5 | EE | 1.42 | 1.22 | 1.57 | 1.22 | 1.46 | 5.87 | 1.22 | 0.71 | 4.6 |
| 8-173-07 | 8-173/0-07 | 7 | FF | 1.77 | 1.54 | 2.00 | 1.46 | 1.85 | 7.56 | 1.54 | 0.95 | 8.8 |
| 8-173-11 | 8-173/0-11 | 11 | GG | 2.40 | 2.24 | 2.44 | 1.89 | 2.28 | 9.13 | 2.24 | 1.10 | 15.2 |
| 8-173-15 | 8-173/0-15 | 15 | HH | 2.83 | 2.44 | 2.84 | 2.20 | 2.60 | 10.10 | 2.44 | 1.26 | 21.0 |
| 8-173-22 | 8-173/0-22 | 22 | JJ | 3.39 | 3.19 | 3.54 | 2.68 | 3.00 | 12.50 | 3.19 | 1.57 | 40.7 |
| 8-173-30 | 8-173/0-30 | 30 | KK | 3.50 | 3.27 | 3.54 | 2.99 | 3.66 | 14.10 | 3.27 | 1.77 | 68.0 |

★ Minimum Ultimate Load is 5 times the Working Load Limit.
 Maximum Proof Load is 2.5 times the Working Load Limit.

| Item No. | | Working Load Limit tons* | Hook Feature Code | Dimensions (mm) | | | | | | | | N.W. Kg |
|------------|---------------|-----------------------------|-------------------|-----------------|----|----|----|----|-----|----|----|------------|
| with latch | without latch | | | P | P1 | A | T | H | K | D | d | |
| 8-173-01 | 8-173/0-01 | 1 | AA | 26 | 22 | 23 | 15 | 19 | 83 | 22 | 10 | 0.3 |
| 8-173-015 | 8-173/0-015 | 1.5 | BB | 24 | 19 | 23 | 17 | 21 | 95 | 19 | 11 | 0.4 |
| 8-173-02 | 8-173/0-02 | 2 | CC | 27 | 20 | 29 | 21 | 26 | 106 | 20 | 13 | 0.7 |
| 8-173-03 | 8-173/0-03 | 3 | DD | 31 | 25 | 32 | 24 | 29 | 122 | 25 | 15 | 0.9 |
| 8-173-05 | 8-173/0-05 | 5 | EE | 36 | 31 | 40 | 31 | 37 | 149 | 31 | 18 | 2.1 |
| 8-173-07 | 8-173/0-07 | 7 | FF | 45 | 39 | 51 | 37 | 47 | 192 | 39 | 24 | 4.0 |
| 8-173-11 | 8-173/0-11 | 11 | GG | 61 | 57 | 62 | 48 | 58 | 232 | 57 | 28 | 6.9 |
| 8-173-15 | 8-173/0-15 | 15 | HH | 72 | 62 | 72 | 56 | 66 | 256 | 62 | 32 | 9.5 |
| 8-173-22 | 8-173/0-22 | 22 | JJ | 86 | 81 | 90 | 68 | 76 | 318 | 81 | 40 | 18.5 |
| 8-173-30 | 8-173/0-30 | 30 | KK | 89 | 83 | 90 | 76 | 93 | 357 | 83 | 45 | 30.9 |

★ Minimum Ultimate Load is 5 times the Working Load Limit.
 Maximum Proof Load is 2.5 times the Working Load Limit.



- YOKE carbon eye hoist hook are manufactured from the finest quality carbon steel.
- YOKE eye hoist hook are quenched and tempered.
- 20,000 cycle fatigue rate to 1.5 times working load limit.
- All eye hoist hooks are 100% magnaflux crack detected.
- All parts with batch number for quality certified and traceability.
- YOKE Eye Hoist Hooks are proof tested to 2 times the working load limit.
- YOKE Eye Hoist Hooks are Predrilled to accept a YOKE latch kits.
- YOKE Eye Hoist Hooks are supplied with certification.

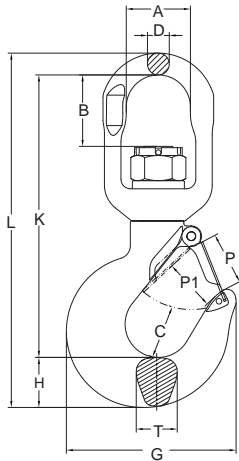
Carbon Eye Hoist Hook

| Item No. | | Working Load Limit tons* | Hook Feature Code | Dimensions (inch) | | | | | | | N.W. Lbs | |
|------------|---------------|-----------------------------|-------------------|-------------------|------|------|------|------|-------|------|-------------|------|
| with latch | without latch | | | P | P1 | A | T | H | K | D | | d |
| 8-193-0075 | 8-193/0-0075 | 0.75 | AA | 1.02 | 0.87 | 0.91 | 0.59 | 0.75 | 3.27 | 0.87 | 0.39 | 0.6 |
| 8-193-01 | 8-193/0-01 | 1 | BB | 0.95 | 0.75 | 0.91 | 0.67 | 0.83 | 3.74 | 0.75 | 0.43 | 0.9 |
| 8-193-015 | 8-193/0-015 | 1.5 | CC | 1.06 | 0.79 | 1.14 | 0.83 | 1.02 | 4.17 | 0.79 | 0.51 | 1.5 |
| 8-193-02 | 8-193/0-02 | 2 | DD | 1.22 | 0.98 | 1.26 | 0.95 | 1.14 | 4.80 | 0.98 | 0.59 | 2.0 |
| 8-193-03 | 8-193/0-03 | 3 | EE | 1.42 | 1.22 | 1.57 | 1.22 | 1.46 | 5.87 | 1.22 | 0.71 | 4.6 |
| 8-193-05 | 8-193/0-05 | 5 | FF | 1.77 | 1.54 | 2.00 | 1.46 | 1.85 | 7.56 | 1.54 | 0.95 | 8.8 |
| 8-193-075 | 8-193/0-075 | 7.5 | GG | 2.40 | 2.24 | 2.44 | 1.89 | 2.28 | 9.13 | 2.24 | 1.10 | 15.3 |
| 8-193-10 | 8-193/0-10 | 10 | HH | 2.83 | 2.44 | 2.84 | 2.20 | 2.60 | 10.10 | 2.44 | 1.26 | 20.3 |
| 8-193-15 | 8-193/0-15 | 15 | JJ | 3.39 | 3.19 | 3.54 | 2.68 | 3.00 | 12.50 | 3.19 | 1.57 | 40.7 |
| 8-193-20 | 8-193/0-20 | 20 | KK | 3.50 | 3.27 | 3.54 | 2.99 | 3.66 | 14.10 | 3.27 | 1.77 | 68.0 |

★ Minimum Ultimate Load is 5 times the Working Load Limit.
 Maximun Proof Load is 2.5 times the Working Load Limit.

| Item No. | | Working Load Limit tons* | Hook Feature Code | Dimensions (mm) | | | | | | | N.W. Kg | |
|------------|---------------|-----------------------------|-------------------|-----------------|----|----|----|----|-----|----|------------|------|
| with latch | without latch | | | P | P1 | A | T | H | K | D | | d |
| 8-193-0075 | 8-193/0-0075 | 0.75 | AA | 26 | 22 | 23 | 15 | 19 | 83 | 22 | 10 | 0.3 |
| 8-193-01 | 8-193/0-01 | 1 | BB | 24 | 19 | 23 | 17 | 21 | 95 | 19 | 11 | 0.4 |
| 8-193-015 | 8-193/0-015 | 1.5 | CC | 27 | 20 | 29 | 21 | 26 | 106 | 20 | 13 | 0.7 |
| 8-193-02 | 8-193/0-02 | 2 | DD | 31 | 25 | 32 | 24 | 29 | 122 | 25 | 15 | 0.9 |
| 8-193-03 | 8-193/0-03 | 3 | EE | 36 | 31 | 40 | 31 | 37 | 149 | 31 | 18 | 2.1 |
| 8-193-05 | 8-193/0-05 | 5 | FF | 45 | 39 | 51 | 37 | 47 | 192 | 39 | 24 | 4.0 |
| 8-193-075 | 8-193/0-075 | 7.5 | GG | 61 | 57 | 62 | 48 | 58 | 232 | 57 | 28 | 6.9 |
| 8-193-10 | 8-193/0-10 | 10 | HH | 72 | 62 | 72 | 56 | 66 | 256 | 62 | 32 | 9.2 |
| 8-193-15 | 8-193/0-15 | 15 | JJ | 86 | 81 | 90 | 68 | 76 | 318 | 81 | 40 | 18.5 |
| 8-193-20 | 8-193/0-20 | 20 | KK | 89 | 83 | 90 | 76 | 93 | 357 | 83 | 45 | 30.9 |

★ Minimum Ultimate Load is 5 times the Working Load Limit.
 Maximun Proof Load is 2.5 times the Working Load Limit.



- YOKE alloy swivel hoist hook are manufactured from the finest quality alloy steel.
- YOKE swivel hoist hook are quenched and tempered.
- 20,000 cycle fatigue rate to 1.5 times working load limit.
- All swivel hoist hooks are 100% magnaflux crack detected.
- All parts with batch number for quality certified and traceability.
- YOKE Swivel Hoist Hooks are proof tested to 2 times the working load limit.
- YOKE Swivel Hoist Hooks are Pre-drilled to accept a YOKE latch kits.

Alloy Swivel Hoist Hook

with brass washer.

| Item No. | | Working Load Limit tons* | Hook Feature Code | Dimensions (inch) | | | | | | | | | | | N.W. Lbs |
|------------|---------------|-----------------------------|-------------------|-------------------|------|------|------|-------|------|-------|-------|------|------|------|-------------|
| with latch | without latch | | | A | B | C | D | G | H | K | L | P | P1 | T | |
| 8-175-01 | 8-175/0-01 | 1 | AA | 1.26 | 0.91 | 0.97 | 0.45 | 3.06 | 0.75 | 4.86 | 6.06 | 1.02 | 0.87 | 0.63 | 1.3 |
| 8-175-015 | 8-175/0-015 | 1.5 | BB | 1.26 | 0.91 | 0.97 | 0.45 | 3.15 | 0.84 | 4.96 | 6.23 | 0.95 | 0.75 | 0.71 | 1.5 |
| 8-175-02 | 8-175/0-02 | 2 | CC | 1.42 | 1.14 | 1.03 | 0.49 | 3.66 | 1.00 | 5.63 | 7.15 | 1.06 | 0.79 | 0.88 | 2.2 |
| 8-175-03 | 8-175/0-03 | 3 | DD | 1.62 | 1.38 | 1.16 | 0.63 | 4.02 | 1.13 | 7.73 | 8.36 | 1.22 | 0.98 | 0.95 | 3.3 |
| 8-175-05 | 8-175/0-05 | 5 | EE | 1.83 | 1.73 | 1.53 | 0.83 | 5.14 | 1.41 | 8.32 | 10.58 | 1.42 | 1.22 | 1.22 | 7.0 |
| 8-175-07 | 8-175/0-07 | 7 | FF | 2.40 | 1.99 | 1.94 | 0.89 | 6.60 | 1.82 | 10.18 | 12.92 | 1.77 | 1.54 | 1.42 | 12.3 |
| 8-175-11 | 8-175/0-11 | 11 | GG | 2.92 | 3.25 | 2.46 | 0.99 | 7.72 | 2.28 | 12.84 | 16.11 | 2.40 | 2.24 | 1.89 | 21.2 |
| 8-175-15 | 8-175/0-15 | 15 | HH | 3.83 | 3.78 | 2.59 | 1.30 | 8.70 | 2.53 | 14.64 | 18.55 | 2.83 | 2.44 | 2.20 | 35.1 |
| 8-175-22 | 8-175/0-22 | 22 | JJ | 4.83 | 4.55 | 2.81 | 1.64 | 10.91 | 3.00 | 18.42 | 23.58 | 3.39 | 3.19 | 2.69 | 73.6 |
| 8-175-30 | 8-175/0-30 | 30 | KK | 4.83 | 4.24 | 3.44 | 1.64 | 13.90 | 3.60 | 19.67 | 25.63 | 3.50 | 3.27 | 3.00 | 101.2 |

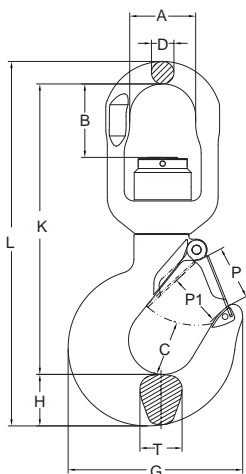
★ Minimum Ultimate Load is 5 times the Working Load Limit.
Maximum Proof Load is 2.5 times the Working Load Limit.

⚠ **WARNING INFORMATION:** This hook is a positioning device and is not intended to rotate under load. For swivel hooks designed to rotate under load, see pages 58 8-175N.

| Item No. | | Working Load Limit tons* | Hook Feature Code | Dimensions (mm) | | | | | | | | | | | N.W. Kg |
|------------|---------------|-----------------------------|-------------------|-----------------|-----|----|----|-----|----|-----|-----|----|----|----|------------|
| with latch | without latch | | | A | B | C | D | G | H | K | L | P | P1 | T | |
| 8-175-01 | 8-175/0-01 | 1 | AA | 32 | 23 | 25 | 12 | 78 | 19 | 123 | 154 | 26 | 22 | 16 | 0.6 |
| 8-175-015 | 8-175/0-015 | 1.5 | BB | 32 | 23 | 25 | 12 | 80 | 21 | 126 | 158 | 24 | 19 | 18 | 0.7 |
| 8-175-02 | 8-175/0-02 | 2 | CC | 36 | 29 | 26 | 13 | 91 | 25 | 143 | 181 | 27 | 20 | 22 | 1.0 |
| 8-175-03 | 8-175/0-03 | 3 | DD | 41 | 35 | 29 | 16 | 102 | 29 | 196 | 212 | 31 | 25 | 24 | 1.5 |
| 8-175-05 | 8-175/0-05 | 5 | EE | 46 | 44 | 38 | 21 | 130 | 36 | 211 | 269 | 36 | 31 | 31 | 3.2 |
| 8-175-07 | 8-175/0-07 | 7 | FF | 61 | 51 | 49 | 23 | 166 | 46 | 258 | 328 | 45 | 39 | 42 | 5.6 |
| 8-175-11 | 8-175/0-11 | 11 | GG | 74 | 82 | 62 | 25 | 196 | 58 | 326 | 409 | 61 | 57 | 48 | 9.6 |
| 8-175-15 | 8-175/0-15 | 15 | HH | 97 | 96 | 65 | 33 | 221 | 64 | 372 | 471 | 72 | 62 | 56 | 15.9 |
| 8-175-22 | 8-175/0-22 | 22 | JJ | 123 | 116 | 71 | 51 | 277 | 76 | 469 | 599 | 86 | 81 | 68 | 33.4 |
| 8-175-30 | 8-175/0-30 | 30 | KK | 123 | 116 | 87 | 51 | 353 | 93 | 503 | 651 | 89 | 83 | 76 | 45.9 |

★ Minimum Ultimate Load is 5 times the Working Load Limit.
Maximum Proof Load is 2.5 times the Working Load Limit.

⚠ **WARNING INFORMATION:** This hook is a positioning device and is not intended to rotate under load. For swivel hooks designed to rotate under load, see Pages 58 8-175N.



- YOKE alloy swivel hoist hook are manufactured from the finest quality alloy steel.
- YOKE swivel hoist hook are quenched and tempered.
- 20,000 cycle fatigue rate to 1.5 times working load limit.
- All swivel hoist hooks are 100% magnaflux crack detected.
- All parts with batch number for quality certified and traceability.
- YOKE Swivel Hoist Hooks are proof tested to 2 times the working load limit.
- YOKE Swivel Hoist Hooks are Predrilled to accept a YOKE latch kits.

Alloy Swivel Bearing Hoist Hook

with ball bearing.

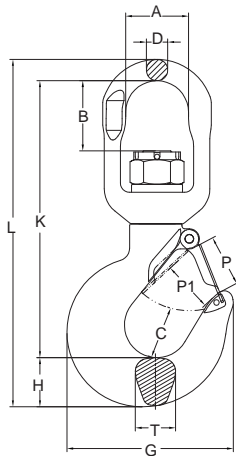
Ball bearing performs to fully swivel under load.

| Item No. | | Working Load Limit tonnes* | Hook Feature Code | Dimensions (inch) | | | | | | | | | | | N.W. | |
|------------|---------------|-------------------------------|-------------------|-------------------|------|------|------|-------|------|-------|-------|------|------|------|-------|--|
| with latch | without latch | | | A | B | C | D | G | H | K | L | P | P1 | T | Lbs | |
| 8-175N-01 | 8-175N/0-01 | 1 | AA | 1.26 | 0.91 | 0.97 | 0.45 | 3.06 | 0.75 | 4.86 | 6.06 | 1.02 | 0.87 | 0.63 | 1.3 | |
| 8-175N-015 | 8-175N/0-015 | 1.5 | BB | 1.26 | 0.91 | 0.97 | 0.45 | 3.15 | 0.84 | 4.96 | 6.23 | 0.95 | 0.75 | 0.71 | 1.5 | |
| 8-175N-02 | 8-175N/0-02 | 2 | CC | 1.42 | 1.14 | 1.03 | 0.49 | 3.66 | 1.00 | 5.63 | 7.15 | 1.06 | 0.79 | 0.88 | 2.2 | |
| 8-175N-03 | 8-175N/0-03 | 3 | DD | 1.62 | 1.38 | 1.16 | 0.63 | 4.02 | 1.13 | 7.73 | 8.36 | 1.22 | 0.98 | 0.95 | 3.5 | |
| 8-175N-05 | 8-175N/0-05 | 5 | EE | 1.83 | 1.73 | 1.53 | 0.83 | 5.14 | 1.41 | 8.32 | 10.58 | 1.42 | 1.22 | 1.22 | 7.3 | |
| 8-175N-07 | 8-175N/0-07 | 7 | FF | 2.40 | 1.99 | 1.94 | 0.89 | 6.60 | 1.82 | 10.18 | 12.92 | 1.77 | 1.54 | 1.42 | 12.3 | |
| 8-175N-11 | 8-175N/0-11 | 11 | GG | 2.92 | 3.25 | 2.46 | 0.99 | 7.72 | 2.28 | 12.84 | 16.11 | 2.40 | 2.24 | 1.89 | 21.2 | |
| 8-175N-15 | 8-175N/0-15 | 15 | HH | 3.83 | 3.78 | 2.59 | 1.30 | 8.70 | 2.53 | 14.64 | 18.55 | 2.83 | 2.44 | 2.20 | 35.3 | |
| 8-175N-22 | 8-175N/0-22 | 22 | JJ | 4.83 | 4.55 | 2.81 | 2.01 | 10.91 | 3.00 | 18.42 | 23.58 | 3.39 | 3.19 | 2.69 | 73.9 | |
| 8-175N-30 | 8-175N/0-30 | 30 | KK | 4.83 | 4.24 | 3.44 | 2.01 | 13.90 | 3.60 | 19.67 | 25.63 | 3.50 | 3.27 | 3.00 | 100.5 | |

★ Minimum Ultimate Load is 5 times the Working Load Limit.
 Maximun Proof Load is 2.5 times the Working Load Limit.

| Item No. | | Working Load Limit tonnes* | Hook Feature Code | Dimensions (mm) | | | | | | | | | | | N.W. | |
|------------|---------------|-------------------------------|-------------------|-----------------|-----|----|----|-----|----|-----|-----|----|----|----|------|--|
| with latch | without latch | | | A | B | C | D | G | H | K | L | P | P1 | T | Kg | |
| 8-175N-01 | 8-175N/0-01 | 1 | AA | 32 | 23 | 25 | 12 | 78 | 19 | 123 | 154 | 26 | 22 | 16 | 0.6 | |
| 8-175N-015 | 8-175N/0-015 | 1.5 | BB | 32 | 23 | 25 | 12 | 80 | 21 | 126 | 158 | 24 | 19 | 18 | 0.7 | |
| 8-175N-02 | 8-175N/0-02 | 2 | CC | 36 | 29 | 26 | 13 | 91 | 25 | 143 | 181 | 27 | 20 | 22 | 1.0 | |
| 8-175N-03 | 8-175N/0-03 | 3 | DD | 41 | 35 | 29 | 16 | 102 | 29 | 196 | 212 | 31 | 25 | 24 | 1.6 | |
| 8-175N-05 | 8-175N/0-05 | 5 | EE | 46 | 44 | 38 | 21 | 130 | 36 | 211 | 269 | 36 | 31 | 31 | 3.3 | |
| 8-175N-07 | 8-175N/0-07 | 7 | FF | 61 | 51 | 49 | 23 | 166 | 46 | 258 | 328 | 45 | 39 | 42 | 5.6 | |
| 8-175N-11 | 8-175N/0-11 | 11 | GG | 74 | 82 | 62 | 25 | 196 | 58 | 326 | 409 | 61 | 57 | 48 | 9.6 | |
| 8-175N-15 | 8-175N/0-15 | 15 | HH | 97 | 96 | 65 | 33 | 221 | 64 | 372 | 471 | 72 | 62 | 56 | 16.1 | |
| 8-175N-22 | 8-175N/0-22 | 22 | JJ | 123 | 116 | 71 | 51 | 277 | 76 | 469 | 599 | 86 | 81 | 68 | 33.5 | |
| 8-175N-30 | 8-175N/0-30 | 30 | KK | 123 | 116 | 87 | 51 | 353 | 93 | 503 | 651 | 89 | 83 | 76 | 45.7 | |

★ Minimum Ultimate Load is 5 times the Working Load Limit.
 Maximun Proof Load is 2.5 times the Working Load Limit.



- YOKE carbon swivel hoist hook are manufactured from the finest quality carbon steel.
- YOKE swivel hoist hook are quenched and tempered.
- 20,000 cycle fatigue rate to 1.5 times working load limit.
- All swivel hoist hooks are 100% magnaflux crack detected.
- All parts with batch number for quality certified and traceability.
- YOKE Swivel Hoist Hooks are proof tested to 2 times the working load limit.
- YOKE Swivel Hoist Hooks are Predrilled to accept a YOKE latch kits.

Carbon Swivel Hoist Hook

with brass washer.

| Item No. | | Working Load Limit tons* | Hook Feature Code | Dimensions (inch) | | | | | | | | | | | N.W. Lbs |
|------------|---------------|-----------------------------|-------------------|-------------------|------|------|------|-------|------|-------|-------|------|------|------|-------------|
| with latch | without latch | | | A | B | C | D | G | H | K | L | P | P1 | T | |
| 8-195-0075 | 8-195/0-0075 | 0.75 | AA | 1.26 | 0.91 | 0.97 | 0.45 | 3.06 | 0.75 | 4.86 | 6.06 | 1.02 | 0.87 | 0.63 | 1.3 |
| 8-195-01 | 8-195/0-01 | 1 | BB | 1.26 | 0.91 | 0.97 | 0.45 | 3.15 | 0.84 | 4.96 | 6.23 | 0.95 | 0.75 | 0.71 | 1.5 |
| 8-195-015 | 8-195/0-015 | 1.5 | CC | 1.42 | 1.14 | 1.03 | 0.49 | 3.66 | 1.00 | 5.63 | 7.15 | 1.06 | 0.79 | 0.88 | 2.2 |
| 8-195-02 | 8-195/0-02 | 2 | DD | 1.62 | 1.38 | 1.16 | 0.63 | 4.02 | 1.13 | 7.73 | 8.36 | 1.22 | 0.98 | 0.95 | 3.3 |
| 8-195-03 | 8-195/0-03 | 3 | EE | 1.83 | 1.73 | 1.53 | 0.83 | 5.14 | 1.41 | 8.32 | 10.58 | 1.42 | 1.22 | 1.22 | 7.0 |
| 8-195-05 | 8-195/0-05 | 5 | FF | 2.40 | 1.99 | 1.94 | 0.89 | 6.60 | 1.82 | 10.18 | 12.92 | 1.77 | 1.54 | 1.42 | 12.3 |
| 8-195-075 | 8-195/0-075 | 7.5 | GG | 2.92 | 3.25 | 2.46 | 0.99 | 7.72 | 2.28 | 12.84 | 16.11 | 2.40 | 2.24 | 1.89 | 20.7 |
| 8-195-10 | 8-195/0-10 | 10 | HH | 3.83 | 3.78 | 2.59 | 1.30 | 8.70 | 2.53 | 14.64 | 18.55 | 2.83 | 2.44 | 2.20 | 35.1 |
| 8-195-15 | 8-195/0-15 | 15 | JJ | 4.83 | 4.55 | 2.81 | 2.01 | 10.91 | 3.00 | 18.42 | 23.05 | 3.39 | 3.39 | 2.69 | 73.3 |

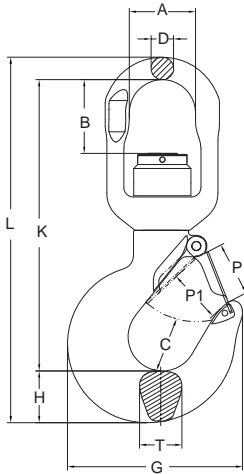
★ Minimum Ultimate Load is 5 times the Working Load Limit.
Maximum Proof Load is 2.5 times the Working Load Limit.

⚠ **WARNING INFORMATION:** This hook is a positioning device and is not intended to rotate under load. For swivel hooks designed to rotate under load, see pages 60 8-195N.

| Item No. | | Working Load Limit tons* | Hook Feature Code | Dimensions (mm) | | | | | | | | | | | N.W. Kg |
|------------|---------------|-----------------------------|-------------------|-----------------|-----|----|----|-----|----|-----|-----|----|----|----|------------|
| with latch | without latch | | | A | B | C | D | G | H | K | L | P | P1 | T | |
| 8-195-0075 | 8-195/0-0075 | 0.75 | AA | 32 | 23 | 25 | 12 | 78 | 19 | 123 | 154 | 22 | 26 | 16 | 0.6 |
| 8-195-01 | 8-195/0-01 | 1 | BB | 32 | 23 | 25 | 12 | 80 | 21 | 126 | 158 | 19 | 24 | 18 | 0.7 |
| 8-195-015 | 8-195/0-015 | 1.5 | CC | 36 | 29 | 26 | 13 | 91 | 25 | 143 | 181 | 20 | 27 | 22 | 1.0 |
| 8-195-02 | 8-195/0-02 | 2 | DD | 41 | 35 | 29 | 16 | 102 | 29 | 196 | 212 | 25 | 31 | 24 | 1.5 |
| 8-195-03 | 8-195/0-03 | 3 | EE | 46 | 44 | 38 | 21 | 130 | 36 | 211 | 269 | 31 | 36 | 31 | 3.2 |
| 8-195-05 | 8-195/0-05 | 5 | FF | 61 | 51 | 49 | 23 | 166 | 46 | 258 | 328 | 39 | 45 | 42 | 5.6 |
| 8-195-075 | 8-195/0-075 | 7.5 | GG | 74 | 82 | 62 | 25 | 196 | 58 | 326 | 409 | 57 | 61 | 48 | 9.4 |
| 8-195-10 | 8-195/0-10 | 10 | HH | 97 | 96 | 65 | 33 | 221 | 64 | 372 | 471 | 62 | 72 | 56 | 15.9 |
| 8-195-15 | 8-195/0-15 | 15 | JJ | 123 | 116 | 71 | 51 | 277 | 76 | 469 | 599 | 81 | 86 | 68 | 33.3 |

★ Minimum Ultimate Load is 5 times the Working Load Limit.
Maximum Proof Load is 2.5 times the Working Load Limit.

⚠ **WARNING INFORMATION:** This hook is a positioning device and is not intended to rotate under load. For swivel hooks designed to rotate under load, see pages 60 8-195N.



- YOKE carbon swivel hoist hook are manufactured from the finest quality carbon steel.
- YOKE swivel hoist hook are quenched and tempered.
- 20,000 cycle fatigue rate to 1.5 times working load limit.
- All swivel hoist hooks are 100% magnaflux crack detected.
- All parts with batch number for quality certified and traceability.
- YOKE Swivel Hoist Hooks are proof tested to 2 times the working load limit.
- YOKE Swivel Hoist Hooks are Pre-drilled to accept a YOKE latch kits.

Carbon Swivel Bearing Hoist Hook

with ball bearing.

Ball bearing performs to fully swivel under load.

| Item No. | | Working Load Limit tons* | Hook Feature Code | Dimensions (inch) | | | | | | | | | | | N.W. Lbs |
|-------------|---------------|-----------------------------|-------------------|-------------------|------|------|------|-------|------|-------|-------|------|------|------|-------------|
| with latch | without latch | | | A | B | C | D | G | H | K | L | P | P1 | T | |
| 8-195N-0075 | 8-195N/0-0075 | 0.75 | AA | 1.26 | 0.91 | 0.97 | 0.45 | 3.06 | 0.75 | 4.86 | 6.06 | 1.02 | 0.87 | 0.63 | 1.3 |
| 8-195N-01 | 8-195N/0-01 | 1 | BB | 1.26 | 0.91 | 0.97 | 0.45 | 3.15 | 0.84 | 4.96 | 6.23 | 0.95 | 0.75 | 0.71 | 1.5 |
| 8-195N-015 | 8-195N/0-015 | 1.5 | CC | 1.42 | 1.14 | 1.03 | 0.49 | 3.66 | 1.00 | 5.63 | 7.15 | 1.06 | 0.79 | 0.88 | 2.2 |
| 8-195N-02 | 8-195N/0-02 | 2 | DD | 1.62 | 1.38 | 1.16 | 0.63 | 4.02 | 1.13 | 7.73 | 8.36 | 1.22 | 0.98 | 0.95 | 3.5 |
| 8-195N-03 | 8-195N/0-03 | 3 | EE | 1.83 | 1.73 | 1.53 | 0.83 | 5.14 | 1.41 | 8.32 | 10.58 | 1.42 | 1.22 | 1.22 | 7.3 |
| 8-195N-05 | 8-195N/0-05 | 5 | FF | 2.40 | 1.99 | 1.94 | 0.89 | 6.60 | 1.82 | 10.18 | 12.92 | 1.77 | 1.54 | 1.42 | 12.3 |
| 8-195N-075 | 8-195N/0-075 | 7.5 | GG | 2.92 | 3.25 | 2.46 | 0.99 | 7.72 | 2.28 | 12.84 | 16.11 | 2.40 | 2.24 | 1.89 | 20.9 |
| 8-195N-10 | 8-195N/0-10 | 10 | HH | 3.83 | 3.78 | 2.59 | 1.30 | 8.70 | 2.53 | 14.64 | 18.55 | 2.83 | 2.44 | 2.20 | 35.1 |
| 8-195N-15 | 8-195N/0-15 | 15 | JJ | 4.83 | 4.55 | 2.81 | 2.01 | 10.91 | 3.00 | 18.42 | 23.58 | 3.39 | 3.39 | 2.69 | 73.3 |

★ Minimum Ultimate Load is 5 times the Working Load Limit.
 Maximun Proof Load is 2.5 times the Working Load Limit.

| Item No. | | Working Load Limit tons* | Hook Feature Code | Dimensions (mm) | | | | | | | | | | | N.W. Kg |
|-------------|---------------|-----------------------------|-------------------|-----------------|-----|----|----|-----|----|-----|-----|----|----|----|------------|
| with latch | without latch | | | A | B | C | D | G | H | K | L | P | P1 | T | |
| 8-195N-0075 | 8-195N/0-0075 | 0.75 | AA | 32 | 23 | 25 | 12 | 78 | 19 | 123 | 154 | 26 | 22 | 16 | 0.6 |
| 8-195N-01 | 8-195N/0-01 | 1 | BB | 32 | 23 | 25 | 12 | 80 | 21 | 126 | 158 | 24 | 19 | 18 | 0.7 |
| 8-195N-015 | 8-195N/0-015 | 1.5 | CC | 36 | 29 | 26 | 13 | 91 | 25 | 143 | 181 | 27 | 20 | 22 | 1.0 |
| 8-195N-02 | 8-195N/0-02 | 2 | DD | 41 | 35 | 29 | 16 | 102 | 29 | 196 | 212 | 31 | 25 | 24 | 1.6 |
| 8-195N-03 | 8-195N/0-03 | 3 | EE | 46 | 44 | 38 | 21 | 130 | 36 | 211 | 269 | 36 | 31 | 31 | 3.3 |
| 8-195N-05 | 8-195N/0-05 | 5 | FF | 61 | 51 | 49 | 23 | 166 | 46 | 258 | 328 | 45 | 39 | 42 | 5.6 |
| 8-195N-075 | 8-195N/0-075 | 7.5 | GG | 74 | 82 | 62 | 25 | 196 | 58 | 326 | 409 | 61 | 57 | 48 | 9.5 |
| 8-195N-10 | 8-195N/0-10 | 10 | HH | 97 | 96 | 65 | 33 | 221 | 64 | 372 | 471 | 72 | 62 | 56 | 15.9 |
| 8-195N-15 | 8-195N/0-15 | 15 | JJ | 123 | 116 | 51 | 42 | 277 | 76 | 468 | 599 | 86 | 81 | 68 | 33.3 |

★ Minimum Ultimate Load is 5 times the Working Load Limit.
 Maximun Proof Load is 2.5 times the Working Load Limit.



8-173
Alloy
Eye Hoist Hook



8-193
Carbon
Eye Hoist Hook



8-175
Alloy
Swivel Hoist
Hook
brass washer



8-175N
Alloy
Swivel Hoist
Hook
ball bearing



8-195
Carbon
Swivel Hoist
Hook
brass washer



8-195N
Carbon
Swivel Hoist
Hook
ball bearing



8-171
Alloy
Shank Hoist Hook



8-191
Carbon
Shank Hoist Hook

| Hook Feature | Working Load Limit | | Replacement |
|--------------|--------------------|--------|-------------|
| | tons* | | |
| Code | Alloy | Carbon | Latch kits |
| AA | 1 | 0.75 | 8-P801-AA |
| BB | 1.5 | 1 | 8-P801-BB |
| CC | 2 | 1.5 | 8-P801-CC |
| DD | 3 | 2 | 8-P801-DD |
| EE | 5 | 3 | 8-P801-EE |
| FF | 7 | 5 | 8-P801-FF |
| GG | 11 | 7.5 | 8-P801-GG |
| HH | 15 | 10 | 8-P801-HH |
| JJ | 22 | 15 | 8-P801-JJ |
| KK | 30 | 20 | 8-P801-KK |



Latch kits